

0-10V Dimmer

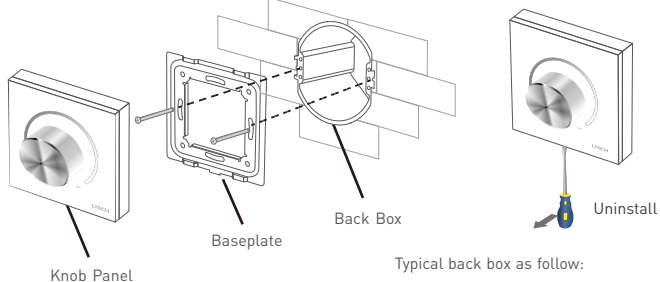
Model: E610P



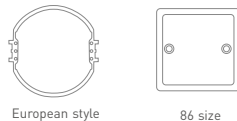
FC CE RoHS (质保5年)



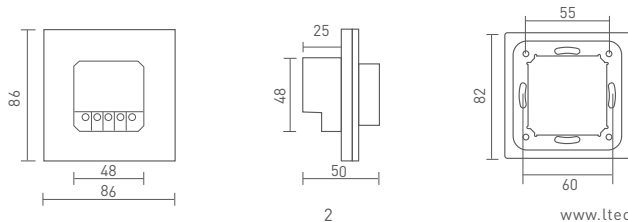
Installation Instruction



Typical back box as follow:



Product Size Unit: mm

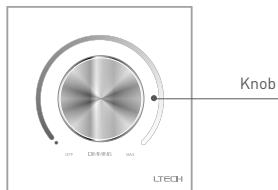


Technical Specs

E610P 0-10V Dimmer

Input Voltage:	100~240Vac, 50-60Hz	Working Temp.:	-10°C~35°C
Switching Power:	90~250Vac, 5A	Dimensions:	L86×W86×H50(mm)
Output:	0~10V Max. 50mA	Package Size:	L106×W106×H60(mm)
Inrush current:	≤50A / 0.1S	Weight(G.W.):	220g

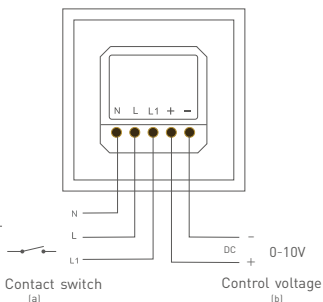
Key Functions



Knob

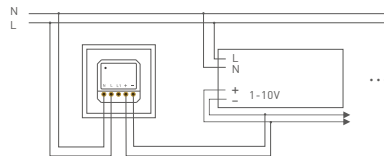
- * Clockwise spin the knob, the brightness increases.
- * Counterclockwise spin the knob, the brightness decreases. Turn off the panel if you spin to the leftmost end [a click can be heard].

Terminals

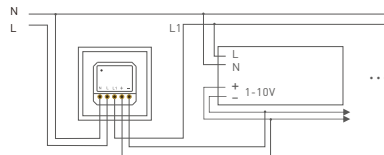


Wiring Diagram

1. Dimming

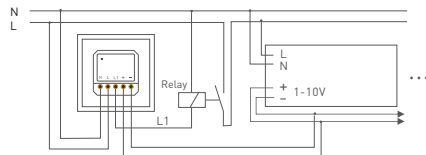


2. Built-in power switch



* An additional relay is needed when total input current of dimmer switch is higher than 5A or inrush current is greater than 50A/0.1S. Over-loaded of relay is out of warranty.

3. External relay connection



* No further notice if any changes in the manual. Product function depends on the goods. Please feel free to contact our official distributor if any question.